



Embassy Gardens, London
Nine Elms SW11

GARTONJONES.COM



Embassy Gardens, London

Nine Elms, SW11

GARTON JONES.COM

9 Albert
Embankment
London
SE1 7SP

Lettings:
+44 (0) 20 7735 1888
nineelms@gartonjones.com
www.gartonjones.com

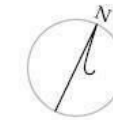
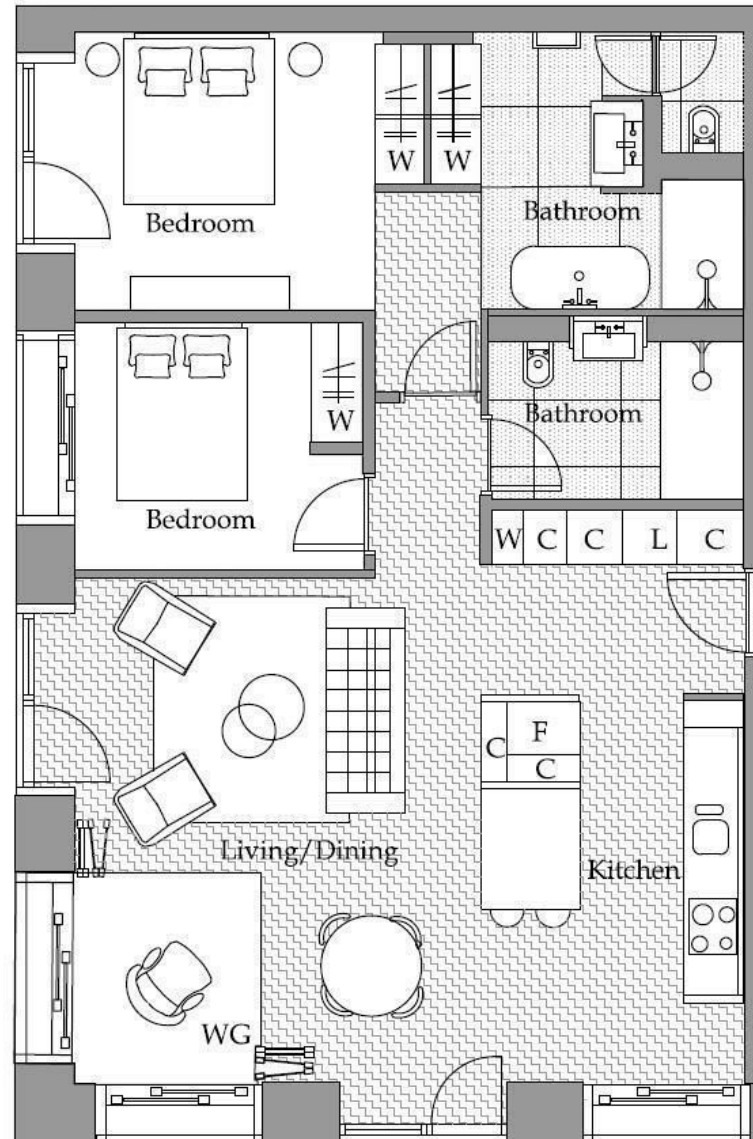
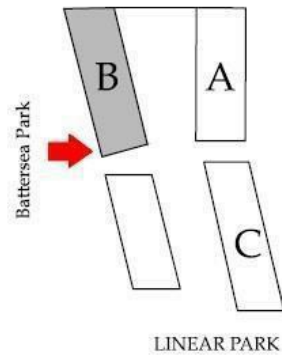
£850 Per Week

A bright & spacious 2 double bedroom apartment with parking (via separate negotiation) in Capital Building, Embassy Gardens of approx. 905sq.ft (84sq.m) and further benefits from an open plan reception room with a smart integrated kitchen, 2 luxury bathrooms (1 en-suite), good internal storage and the interiors boasting high ceilings, walnut parquet flooring, marble counter tops in the kitchens and thermostatically controlled comfort cooling and heating. The property also benefits from a spacious terrace overlooking the communal gardens. For the residents' private use there is a 24-hour concierge, cinema screening room, library & lounge, business centre, yoga studio, 2 private gymnasiums, and a very cool indoor/outdoor swimming pool. Residents of Embassy Gardens also have access to the world-famous sky pool, connecting two of the towers at Legacy Building. Amenities such as District coffee shop, Darbys' restaurant, The Alchemist cocktail bar, Homeboy bars, as well as a Waitrose convenience store are located on-site but you are also close to a host of other local shops and restaurants on your doorstep. The new Nine Elms tube station, part of the Northern Line extension, has now opened and is less than a 5 minutes' walk from Legacy Building providing easy access into Central London and the transport links of Vauxhall Station are also within walking distance.

- 905sq.ft (84sq.m)
- 2 Bedrooms
- 2 Bathrooms (1 En-Suite)
- Dual Aspect Open Plan Reception Room
- Parking (via Separate Negotiation)
- Winter Garden
- 24 Hour Concierge
- Sky Pool
- 2 Residents Gyms
- Moments from Nine Elms Tube Station



Central London
Thames River



2 Bedroom

Total area:

84.1sqm/905sqft

Living area

7500x5580mm

Bedroom 1 :

4565x3135mm

Bedroom 2 :

3265x2800mm

Winter Garden:

4.9sqm

